



COLORADO

Department of Transportation

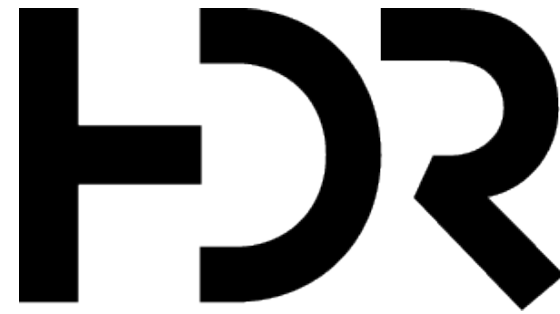
SH 52 PEL / ACP Coalition Kick Off Meeting



- SH 52 General Information
 - Project Team
 - Study Area
 - Schedule and Milestones
 - Project Success
 - Project Communication
- PEL (Planning and Environmental Linkages) Study Expectations
 - What is a PEL Study?
 - What is an ACP?
 - Next Steps after a PEL
 - Additional Information



Project Team

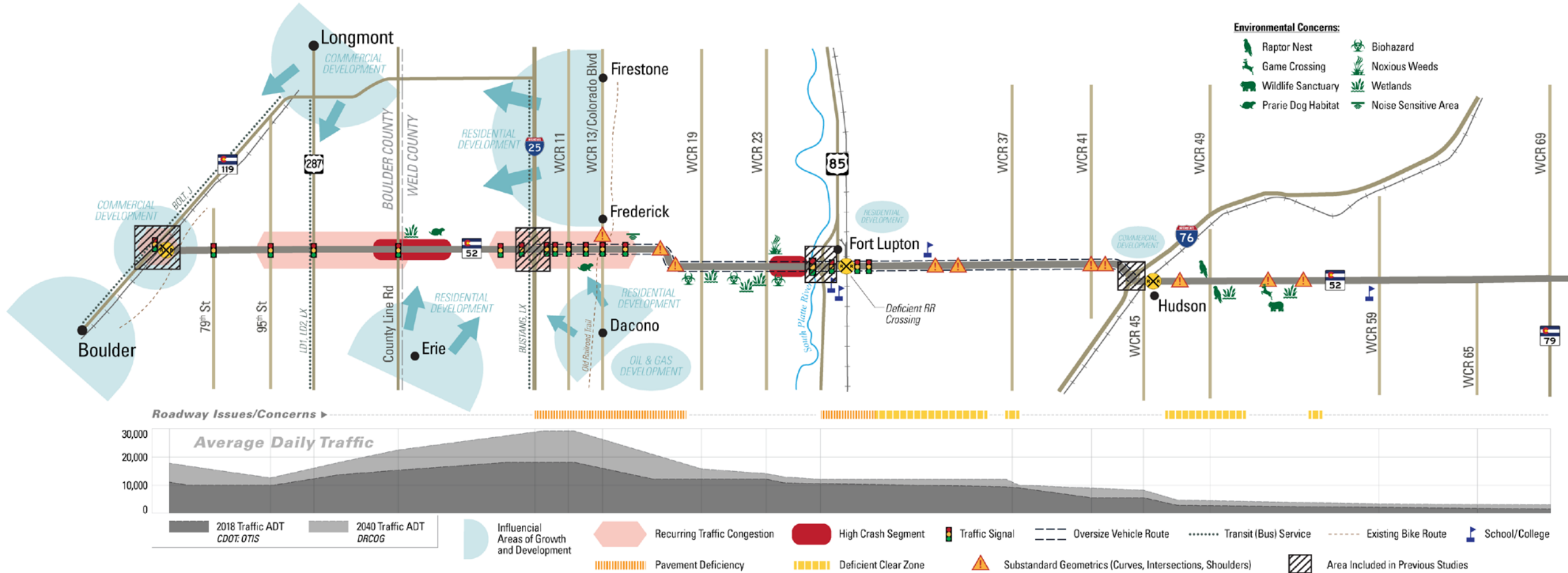


CDR ASSOCIATES
COLLABORATIVE DECISION RESOURCES



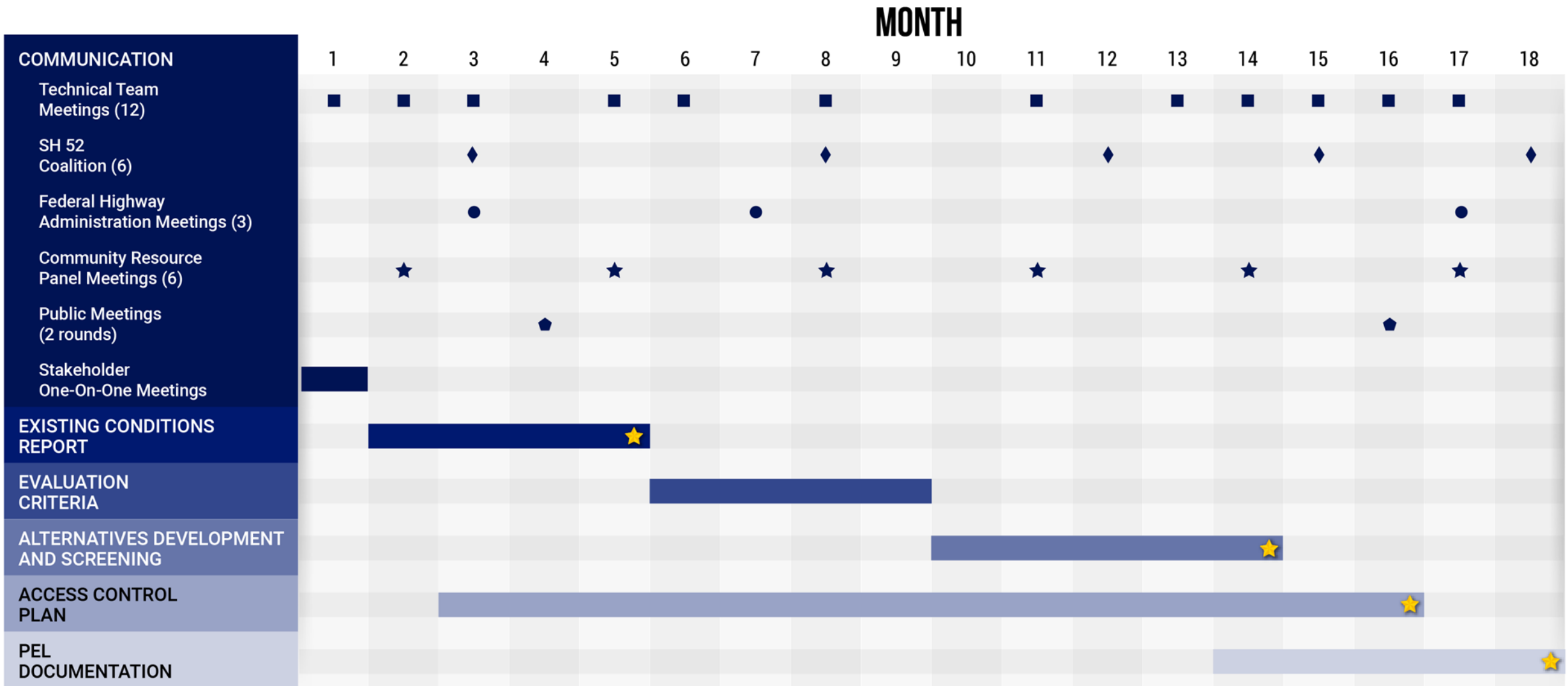


Project Overview SH 119 to SH 79





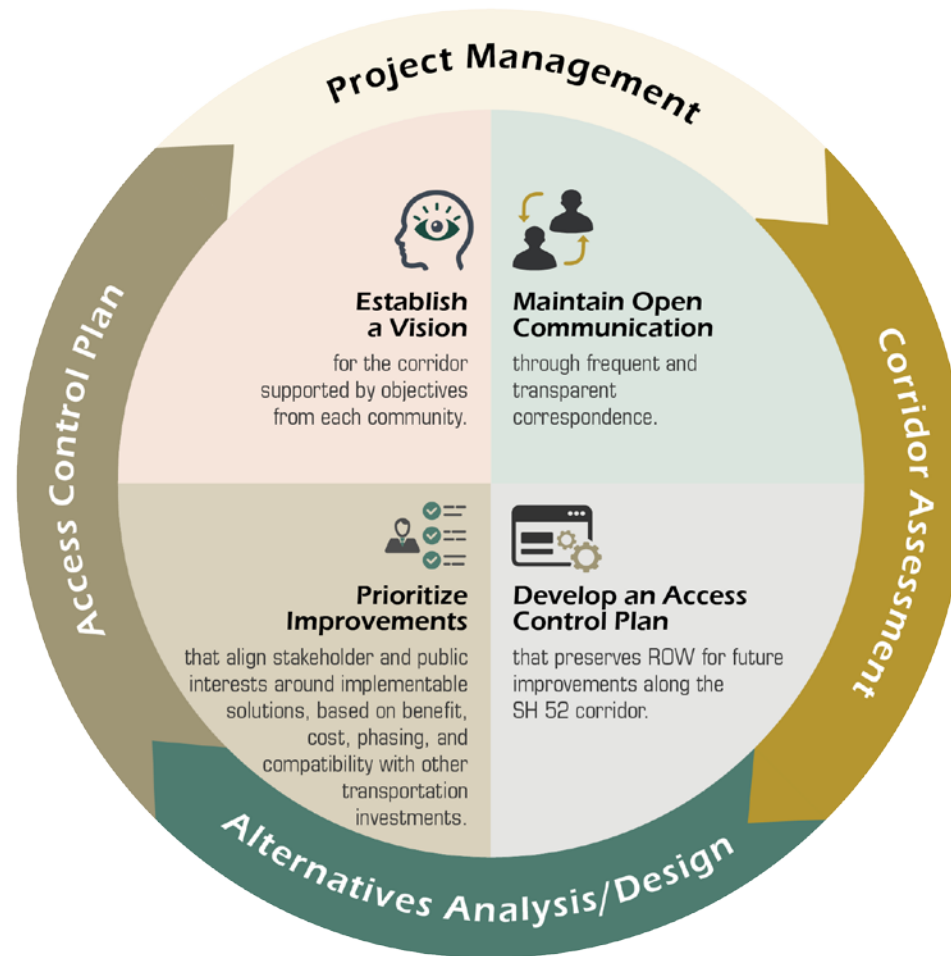
Schedule and Milestones



★ Deliverables



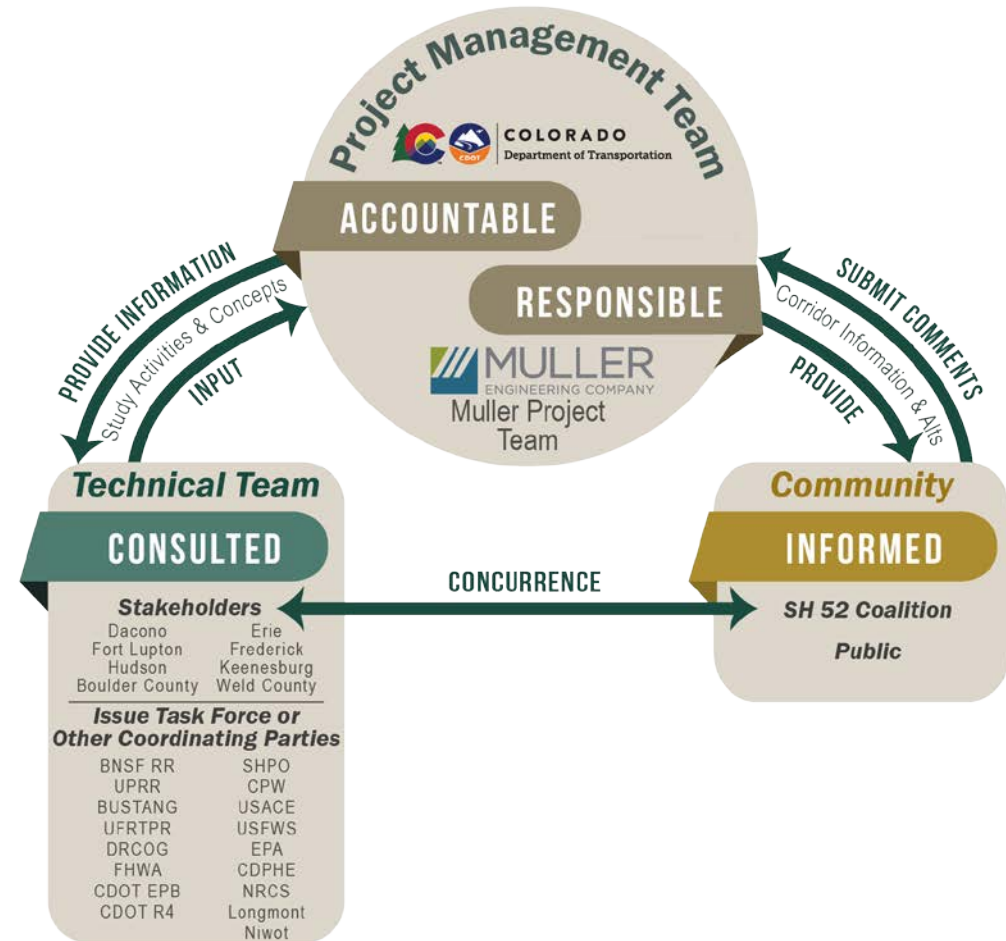
Project Success





Communication

- SH 52 Coalition Meetings
- Technical Team Meetings
- Stakeholder One-on-One Meetings
- Community Panel Meetings
- Public Meetings





Coalition Meeting Schedule

Topic	Date *
Kickoff Meeting	February 2020
Purpose & Need and Public Meeting Planning	June 2020
Evaluation Criteria and Alternatives Screening	November 2020
Corridor Projects	March 2021
Updates and Public Meeting Planning	June 2021
Draft PEL	September 2021

*Subject to change



Technical Team Meetings

- Provide Input to the Project Team
- Anticipate 12 Meetings - April 2020 to August 2021
- Consist of Municipal and County Governments
- Engage Resource Agencies and other Stakeholders

Corridor Local Agencies

Dacono

Fort Lupton

Hudson

Erie

Frederick

Keenesburg

Boulder County

Weld County



Stakeholder One-on-One Meetings

- One-on-one meetings with Local Stakeholders
- Opportunity for Stakeholders to provide input to the PEL and ACP processes
- Provide a platform to discuss and prioritize transportation issues and project implementation
- 20 Meetings to occur in first quarter of PEL Study



Community Resource Panel Meeting

- Six meetings scheduled for the duration of the Project.
- Will be reserved for focus group updates, HOA meetings, Council briefings, Board updates etc.





Public Meetings



- Two rounds of Public Meetings
- Present existing conditions and Purpose and Need
- Present alternatives and recommendations



What is a Planning and Environmental Linkages (PEL) Study

- Develop a vision for corridor
- Establish Existing Conditions
- Define Purpose and Need
- Develop and Evaluate Alternatives
- Prioritize projects and identify funding opportunities





Outcomes to expect from a PEL Study



Developed vision
for the corridor

Understanding of
Existing
Conditions

ROW
Identification

Support and input
from the public

Potential
Improvements
with stakeholder
input

Foundation for a
NEPA Evaluation in
the near future



What is an Access Control Plan (ACP)

- Help regulate access on SH 52
- Communication tool for CDOT and Local Agencies
- Identified future right-of-way (ROW) needs
- Encourages mobility and safety when considering the future development
- Provide guidance for land developers



Next steps after the PEL study

- Transition from PEL to NEPA
- Determining preferred alternative
- Detailed study of environmental resources
- Completion of environmental permitting
- Detailed design





Additional Resources

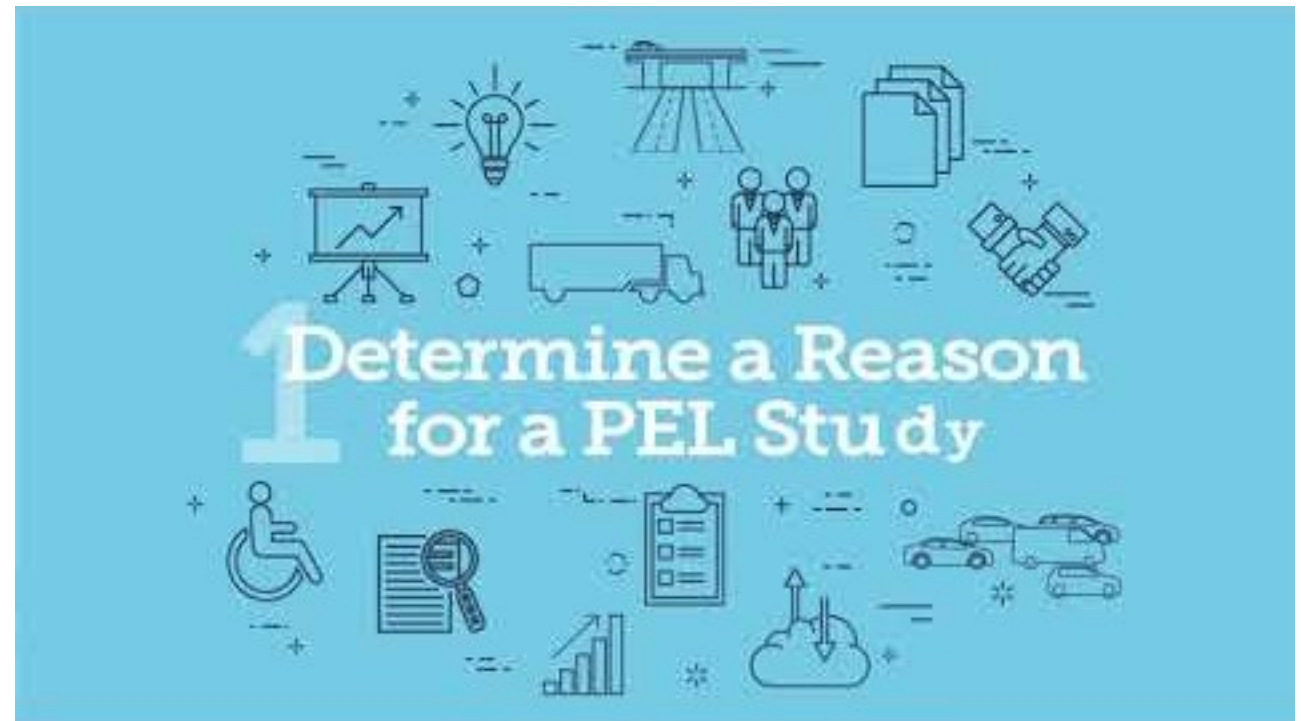
CDOT PEL Handbook

<https://www.codot.gov/programs/environmental/planning-env-link-program/pel-handbook-january-2016/view>

CDOT PEL Video:

<https://www.codot.gov/programs/environmental/planning-env-link-program/pel-study-video>

CDOT PEL Video





COLORADO

Department of Transportation

Thank You

